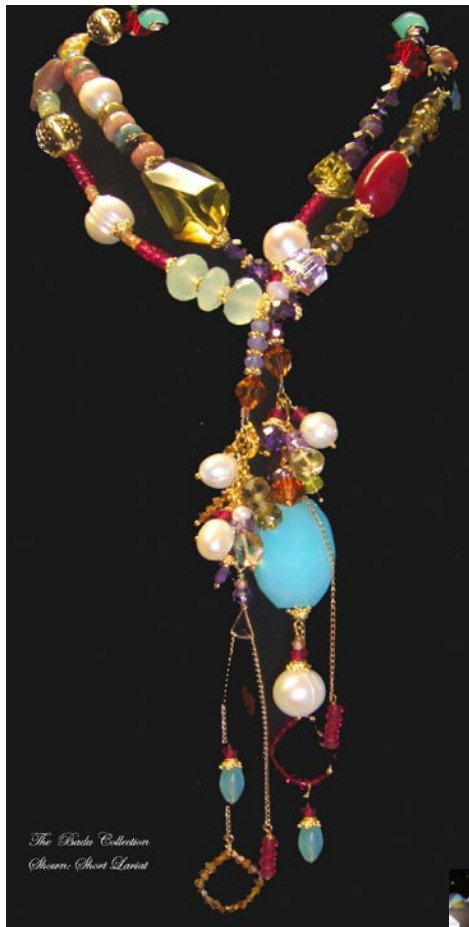


## A SUPRISE FOR MARCH— JEWELLERY DESIGNER **AMY LEINER**

AMY LEINER - Recently nominated for Fashion Group International's Rising Star Award, Amy Leiner has stars in her eyes. Her signature jewelry has a genuine, delicate, sophistication and has appeared at the Oscars, on Broadway, in the movies, on CBS fashion segments and on news anchorwomen. Leiner has also been featured on Martha Stewart Living, which is still airing, and has adorned a special line of furniture with her removable ladder necklace as the ladder-back of these beautifully, handcrafted, iron chairs.

Amy's jewelry is in the spotlight. She does the jewelry for Jane Seymour and her clothing line. Eartha Kitt, Bea Arthur, Carol Burnett, Gwyneth Paltrow, Goldie Hawn, and many more celebrities have been adorned by Amy Leiner's designs. Amy's Ladder Necklace TM appeared on the cover of WWD and Leiner designed the necklace for Eden Espinosa's Broadway opening of "BROOKLYN" incorporating a pendant given to Eden from her grandmother. In August, she visited the set at Paramount Studios in Los Angeles to work with the stylist of "Barbershop," the new series on Showtime for a bright new star, Toni Trucks. Leiner was also called in to do Toni's jewelry for the 2005 Emmy Awards. Leiner's pieces can also be seen in the new hit film, "The Wedding Crashers" starring Vince Vaughan and Owen Wilson, and on Jane Seymour's new comedy-sitcom, "Modern Men" scheduled to air this month. She has been invited to sponsor such events as: The Golden Globe Awards, Sundance Film Festival, LA Laker's Celebrity Fundraiser, The Maui Film Festival and the MTV Film Awards.



Every piece is handmade in Amy's Madison, CT. studio



These are just a few examples of some of the stunning pieces we've chosen for LESLIEJANE. Prices range from about \$190 to 598 for necklaces, we've also brought in earrings with certain collections. Please let us know if you'd like to make a special order. You can see styles online at [www.amyleinerdesigns.com](http://www.amyleinerdesigns.com)